



# Efficiency can be breathtaking

The Intuos3 Pen Tablet System from Wacom



intuos<sub>3</sub>

## Outstanding design. Unique functionality. Perfect ergonomics. The Intuos3 Pen Tablet System.

Work more intuitively, ergonomically and productively than ever before. Whether you're a digital photographer, HDTV video editor, industrial designer, graphics artist, illustrator or 3D developer, there is an Intuos3 solution that is perfect for your needs. And you'll enjoy a look and feel that you won't find anywhere else.

### **Programmed for efficiency**

The Intuos3 Pen Tablet System offers you innovative tools that work in perfect harmony with one another, significantly accelerating your workflow and taking you to a new level of natural, flexible and efficient creative working.

You'll actually be able to feel your efficiency and productivity improve. And working will become much more enjoyable.

### **A new dimension in breathtaking efficiency**

The Intuos3 A3 Wide and A5 Wide Pen Tablets in 16:10 format offer users accelerated workflows and provide more space to work – perfect for widescreen and multiple monitor environments. The Intuos3 A4 Oversize Pen Tablet supplies the extra working area required for layout and engineering work.

The Intuos3 A3 Wide and A4 Oversize Pen Tablets have a Quickpoint area for superfast navigation and a transparent overlay for tracing. And both are available in special DTP or CAD configurations.



reddot design award  
winner 2005

The Intuos3 Pen Tablet System won  
the Reddot Design award in 2005.

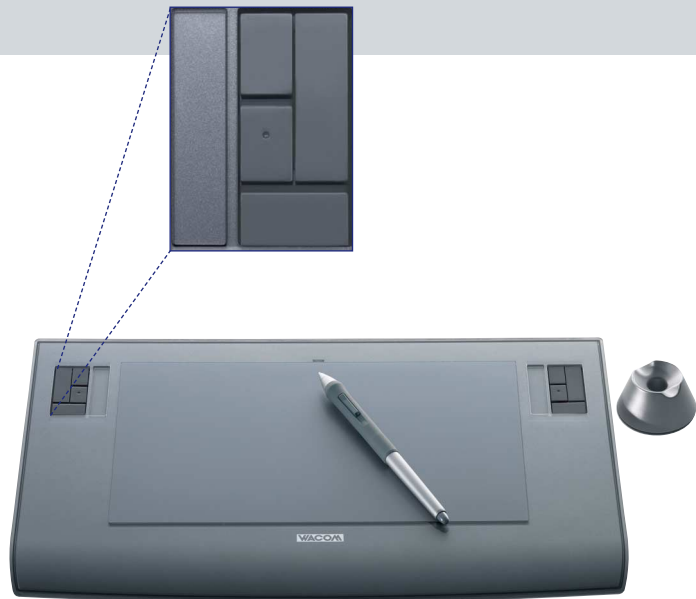
## The workflow accelerator.

The interaction of the Grip Pen, ExpressKeys and Touch Strip increases efficiency and improves productivity in creative applications. The pressure sensitive tools in applications such as Adobe® Photoshop® can be used as efficiently and naturally as possible using the Pen's 1024 pressure levels.

### **ExpressKeys/Touch Strip**

Each Pen Tablet features 8 (A5/A4/A3) or 4 (A6) integrated, freely programmable buttons that can be used as “hot” keys for frequently used menu commands and specific key combinations.

The Touch Strip is a touch sensitive scrollbar that, in combination with the ExpressKeys and the Grip Pen, significantly accelerates your workflow.



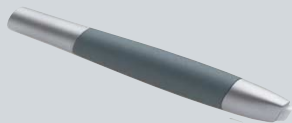
## Naturally superior input devices.



### **Intuos3 Grip Pen:**

Cordless and battery-free, 1024 pressure levels and 5080 dpi resolution. Maximised precision and ergonomics. The anti-slip, rubberised grip area reduces the grip load by up to 40%.

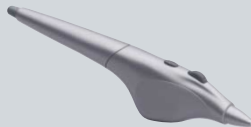
(Includes: 3 standard tips, 1 Stroke Pen tip, 1 Felt Pen tip)\*



### **Intuos3 Art Marker (accessory):**

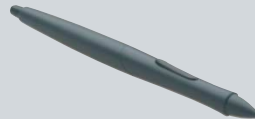
Rotation sensitive marker pen with triangular plastic and/or real felt tip. For sketching as natural as with a conventional marker pen.

(Includes: 1 standard tip, 2 Felt Pen tips)



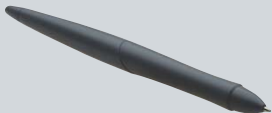
### **Intuos3 Airbrush (accessory):**

The real digital Airbrush. Pressure and incline sensitive, adjustable to 1024 levels via finger-wheel, pen point and eraser are pressure sensitive to 1024 levels.



### **Intuos3 Classic Pen (accessory):**

The same feature set as the Intuos3 Grip Pen but with a slimmer profile for optimal weight and balance in your hand. (Includes: 3 standard tips, 1 Stroke Pen tip, 1 Felt Pen tip)



### **Intuos3 Ink Pen (accessory):**

The ideal input device for tracing and illustrating original artwork and inputting hand-written text, including signatures. (Includes: 1 standard tip, 1 ink tip)



### **Intuos3 Lens Cursor (accessory):**

The extremely accurate Lens Cursor with five programmable buttons and a movable lens is the ideal tool for CAD/CAE applications and 2D and 3D graphics applications\*\*.



### **Intuos3 Mouse (accessory):**

Optimised, cordless mouse with 5 programmable buttons and scroll-wheel. No ball and high resolution for light and precise control. (Not supplied as standard with every Pen Tablet)

\* Supplied with all Intuos3 Pen Tablets except Intuos3 A3 Wide CAD configuration and Intuos3 A4 Oversize CAD configuration.

\*\* Supplied as standard with Intuos3 A3 Wide CAD configuration and Intuos3 A4 Oversize CAD configuration.

## Getting the most from your applications.



### **Picture retouching**

Intuitive, easy and fast picture retouching with the pressure sensitive tools in Adobe® Photoshop®. Optimise parameters such as exposure, sharpness and colours with the Grip Pen's unique 1024 pressure levels. The Intuos3 Pen Tablets in 16:10 wide format enable optimal usage of the entire working surface with widescreen monitors and in multiple monitor environments.



### **Video editing**

The Intuos3 A3 and A5 Wide Pen Tablets in 16:10 format are ideal for working with video editing applications such as Adobe® AfterEffects™. The pressure-sensitivity of the pen enables you to control the opacity and width of brush strokes or create seamless clone effects. The pen also offers the natural handling that makes it easier to access the numerous palettes and small levers in many other video editing applications.



### **Industrial design**

The Intuos3 A3 Wide Pen Tablet in 16:10 format provides the extra-large workspace required for optimal working in design and engineering applications. The Grip Pen and other Intuos3 input devices ensure maximum comfort and efficiency when creating complex technical and product designs, even when used for long periods.



### **Paint, draw and illustrate**

Use the Grip Pen or Airbrush for more natural-looking digital pictures in Corel Painter™, for intuitive drawing in Alias® Sketchbook™ and for fluid animation in Macromedia® Flash™. And to get the most from the system, use the new Art Marker for sketching as natural as with a conventional marker pen.



## The perfect fit for your ideas – whatever the application.

With Intuos3, you'll find the right Pen Tablet System for you, whatever your application and space requirements. Just choose between A6, A5, A5 Wide, A4, A4 Oversize or A3 Wide size.

The Intuos3 A3 Wide and A4 Oversize Pen Tablets are also available in either a DTP or CAD configuration.

Intuos3	A6	A5	A5 Wide	A4	A4 Oversize DTP Version	A4 Oversize CAD Version	A3 Wide DTP Version	A3 Wide CAD Version
Grip Pen	✓	✓	✓	✓	✓	–	✓	–
Mouse	✓	✓	–	✓	–	–	–	–
Lens Cursor	–	–	–	–	–	✓	–	✓



Watch for the Penabled logo to ensure you're getting the natural feel and superior performance of Wacom's patented cordless and battery-free pen technology.

**WACOM Europe GmbH**

Europark Fichtenhain A9  
D-47807 Krefeld

Phone: +49 (0) 2151 36 14-444  
Fax: +49 (0) 2151 36 14-111

info@wacom-europe.com  
www.wacom.com

© 2006 WACOM Europe GmbH. All rights reserved. Wacom is a registered trademark, and Intuos and Tool-ID are trademarks of Wacom Company, Ltd. All other product and company names are trademarks and/or registered trademarks of their respective owners. Modifications and errors excepted. BRO-PTZFA-EN